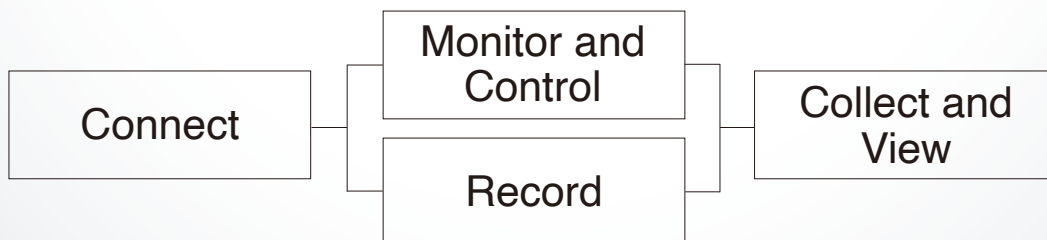


Linking Together a Diverse Array of Instruments



*The name GENNECT was coined from the Japanese word for "field" (genba) and the English word connect.



Special
WEB site

Scan this QR Code for more information about GENNECT One.

Extensive Support for Tasks Ranging from Monitoring to Reporting

Introducing a programming-less solution
 GENNECT One links together a diverse array of instruments so you can solve problems in the field.

Daily monitoring

Monitor measured values from the field in real time.

Remote control

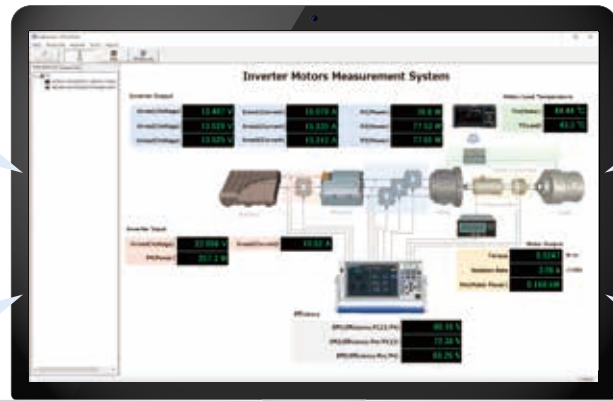
Change settings remotely, without the need to visit the measurement field.

Anomaly detection

React quickly to anomalies occurring in the field.

Daily report creation

Easily compile regular reports.



HUB

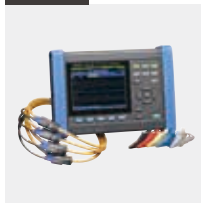


Connect each measuring instrument with LAN cable

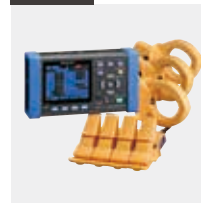
LAN



LAN



LAN



LAN



LAN



USB



Power Analysis

- PW6001
- PW3390
- PW8001*
- PW3335*
- PW3336*
- PW3337*

*Support coming soon

Monitoring Power Quality

- PQ3100
- PQ3198

Understanding Power Consumption

- PW3360
- PW3365

Voltage and temperature management

- LR8450,50-01
- LR8410
- LR8400 series

Waveform Analysis

- MR6000

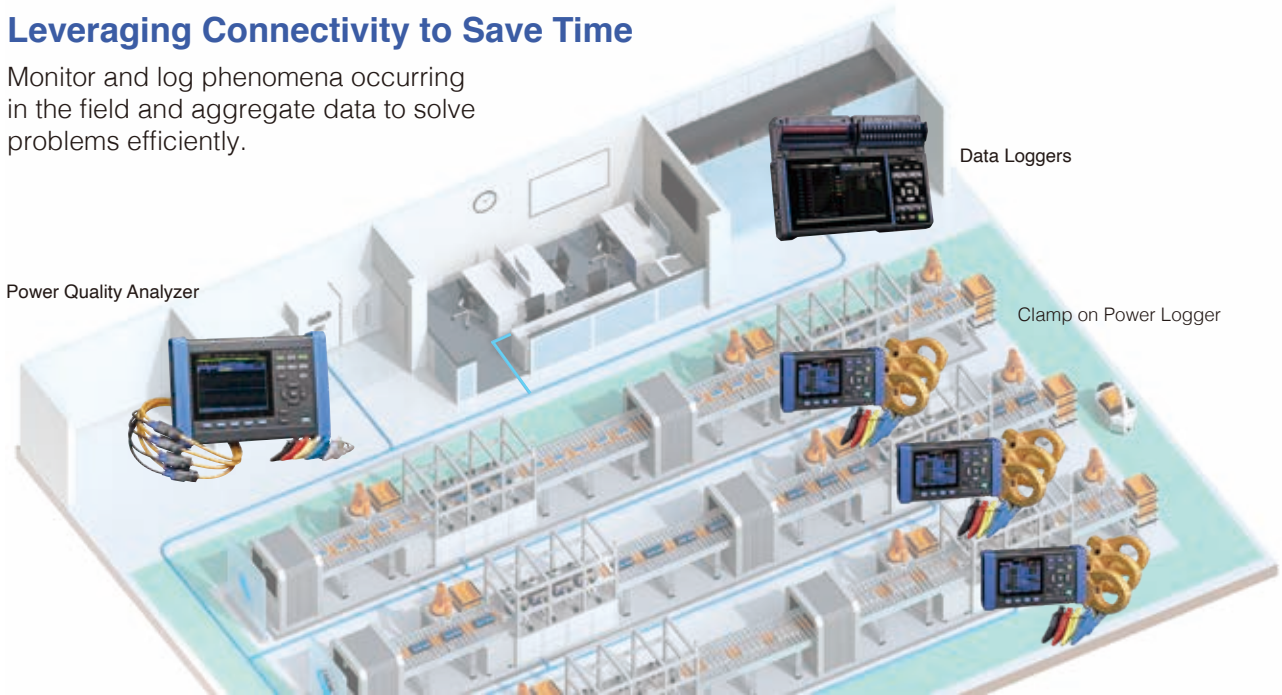
UPS Inspection

- BT3554
- BT3554-50



Leveraging Connectivity to Save Time

Monitor and log phenomena occurring in the field and aggregate data to solve problems efficiently.



Task	Functions and capabilities
Daily monitoring, anomaly detection	Display measured values from multiple, PC-connected instruments on an intuitive and illustrative dashboard by freely placing the measurement values and other elements anywhere on your own photos or diagrams. Set threshold ranges to set alarms and check their states on the display. Leverage this information to respond more quickly to problems in the field.
Remote control	Use remote control functionality to change the settings of multiple LAN-connected instruments from a PC without the need to visit the fields. Synchronize instruments' clocks to a PC's clock regularly and automatically without using dedicated triggers.
Collection and summarization of data from multiple instruments; daily report creation	Aggregate logging data from multiple instruments and display it using graphs. Boost work efficiency by easily tabulating measurement data on a daily basis and automatically generating daily reports or CSV files.
Central management of measurement data	Automatically transfer measurement files saved on instruments to a PC, acquire files manually , or review data as a time series using the time-series viewer . Launch dedicated software if you need to analyze measurement data in more detail.

Compatible instruments

	Time series viewer	Logging	Dashboard	File Acquisition (Manual)*1	File Transfer (automatic)	Remote control	Import data from instruments (USB)	Configure instrument settings	Automatic time synchronization *4
	LAN								
Power Quality Analyzer									
PQ3100	-	✓	✓	✓	✓	✓	-	-	✓
PQ3198	-	✓	✓	✓	✓	✓	-	-	✓
Clamp on Power Logger									
PW3360, PW3365	✓	✓	✓	✓	✓	✓	-	-	✓
Power Analyzer									
PW3390	-	✓	✓	✓	-	✓	-	-	✓
PW6001	-	✓	✓	✓	-	✓	-	-	✓
PW8001 *5	✓	✓	✓	✓	✓	✓	-	-	✓
Power Meters									
PW3335, PW3336, PW3337 *5	-	✓	✓	-	-	✓	-	-	✓
Data Loggers									
LR8450, LR8450-01	✓	✓	✓	✓	✓	✓	-	-	✓
LR8410, LR8416	✓	✓	✓	✓	✓	✓*2	-	-	✓
LR5001, LR5011, LR5021, LR5031, LR5014, LR5042, LR5043, LR5051, LR5061	✓*3	-	-	-	-	-	-	-	-
Memory HiCorder									
MR6000	-	✓	✓	✓	✓	✓	-	-	✓
Battery Tester									
BT3554-50	-	-	-	-	-	-	✓	✓	-

*1 The type of storage supported varies with the instrument.

*2 GENNECT One only supports Internet Explorer 11 with Java installed (because it uses a Java applet).

*3 GENNECT One can import measurement files acquired by the PC application software "LR5000 Utility".

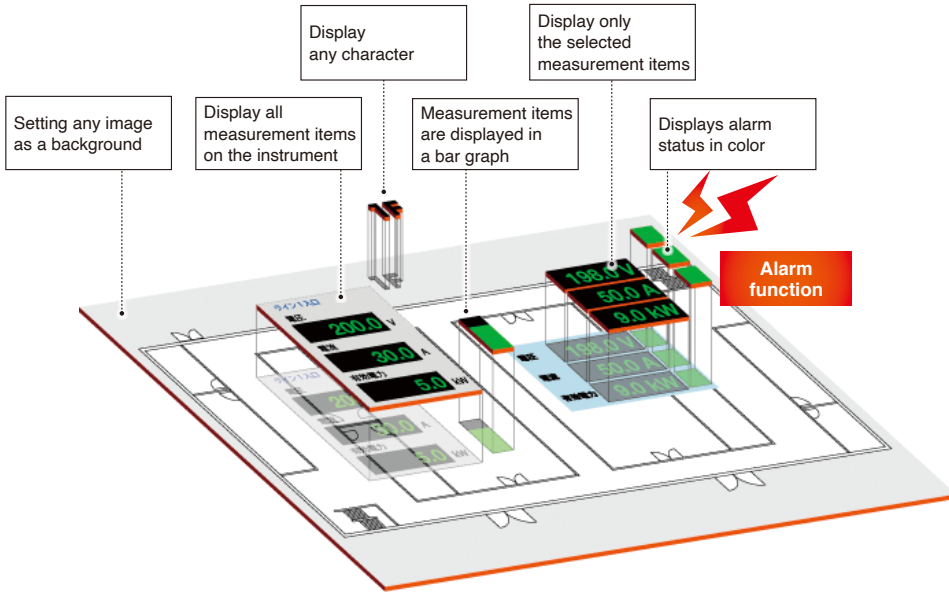
*4 When setting the clock of measuring instruments, the measurement or the integration may pause. *5 Support coming soon

Monitoring and Controlling

In manufacturing...

Dashboard

Create a dashboard by freely placing components like measured values, alarms, and graphs onto your original background image. Measured values can be logged while displaying them on the dashboard in real time.



Issue

You want to react quickly to anomalies at the field.

Solution: Anomaly Detection

Generate alarms whenever measured values exceed the user's own threshold values and review them on a PC in the office.

Layout parts change to alarm color when the set threshold range is exceeded.
The date, time and content of the alarm are automatically saved.
Thresholds: upper limit, lower limit, upper and lower limit

Avoid rushing out to the fields



Issue

You want to change settings remotely, without the need to visit the measurement field.

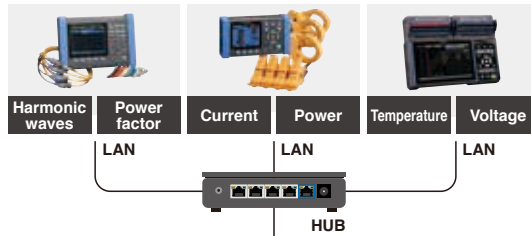
Solution: Remote Control

Change instrument settings without visiting the measurement field.

Number of simultaneous operation : 1 unit at a time



Number of instruments able to connect: 15 units



Time discrepancies

19:32 19:29 19:41

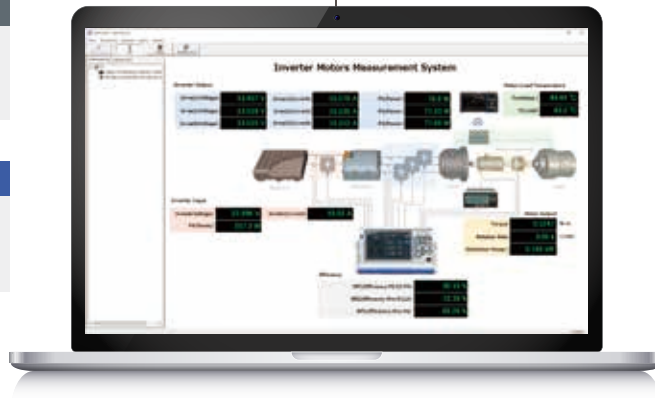


Issue

You want to compare data after synchronizing instruments' clocks.

Solution: Clock Synchronization

Synchronize instruments' clocks to a PC's clock regularly and automatically.



Shared dashboard and logging features

Logging intervals	1, 2, 5, 10, 30 sec., 1, 2, 5, 10, 30 min., 1 hour
Monitor intervals (on the dashboard)	(Available interval settings depend on the LAN communications environment.)
Data division	1 day or 1 hour
Data output	Automatic daily report output (Excel®), Automatic CSV output
Interface	LAN

Recording

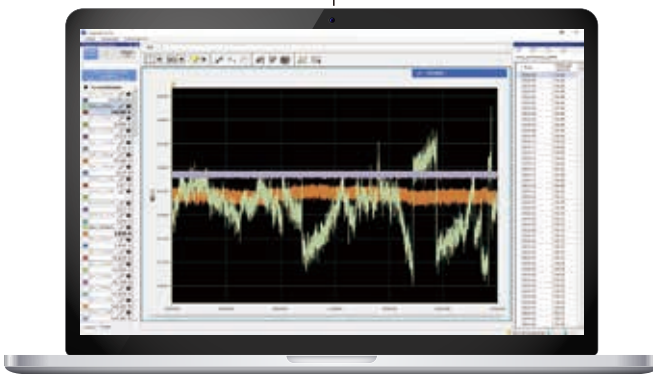
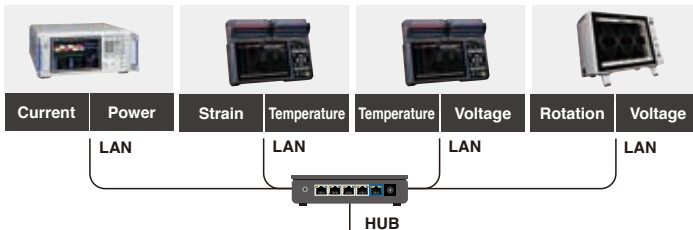
In research and testing...

Logging

Capture measurement data from multiple instruments at a fixed interval once logging starts. Display and save downloaded data in real time on a PC and use it to automatically generate daily reports.



Number of instruments able to connect: 15 units



Issue

You're aggregating calculation results using saved measurement data, but you're spending too much time on daily processing.

Solution: Inter-channel Calculations

Perform calculations using previously defined equations, and display and save the results. Up to 16 calculations can be performed simultaneously.

Numerical value	Channels or constants
Basic arithmetic operations	+, -, x, ÷, brackets
Basic operation	Absolute value, square root, cube root, power
Trigonometric function	sin, cos, tan, arcsin, arccos, arctan
Exponential functions, logarithmic functions	exp, log10, ln
Rounding	Round up, down, or round to the specified number of digits

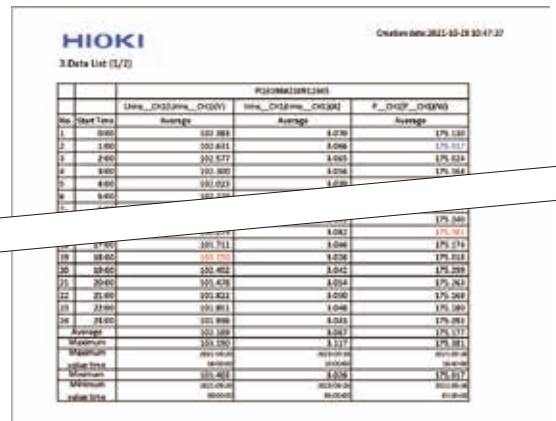
Issue

You're having difficulty compiling daily reports that tabulate measurement data from multiple instruments because you're performing measurement continuously over an extended period of time. You want to automate that process.

Solution: Daily Automatic Reports

Automatically generate one file per day based on values that have been tabulated over a specified interval. Automatically generate CSV files.

Example of an automatically generated daily report



Shared dashboard and logging features

Measurement parameters	
PW6001, PW3390 Support coming soon: PW8001, PW3335, PW3336, PW3337	Basic Measurement items, Harmonic measurement items (Instantaneous value per interval)
PQ3100, PQ3198, PW3365, PW3360	Voltage, Current, Power (Instantaneous value per interval)(MAX, MIN, AVE values between intervals)
LR8450, LR8450-01, LR8410, LR8416, MR6000	Various measurement items such as Temperature, Analog input, etc. (Instantaneous value per interval)
Number of items able to monitor and log	Max. 512 items + Inter-channel calculation value 16 items

Collection and Viewing

Issue
 You're expending a significant amount of effort and management man-hours every time you collect measurement data after an event.

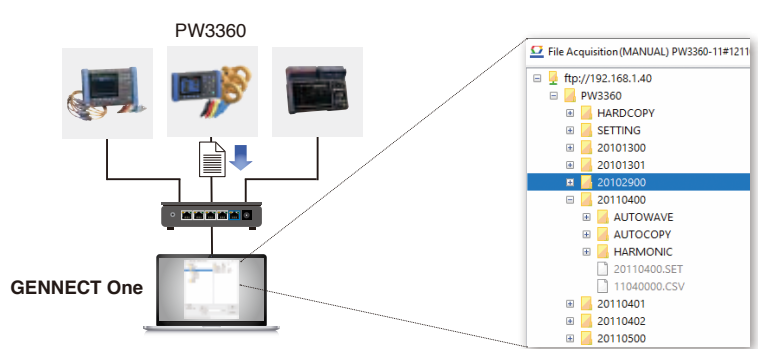
Solution: You can import measurement data to a PC from the field-installed measuring instruments. The existing data in the PC can also be viewed on the GENNECT One software.

File Transfer (Automatic)
 When a measurement file is saved by a measurement device connected via LAN, it is automatically transferred to the PC.

File Acquisition (Manual)
 Measurement files stored in measurement devices connected via LAN can be directly accessed and acquired from a PC.

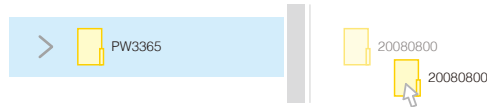


Example: The PQ3198 is installed in the field to monitor power supply abnormalities. When an event occurs, the saved data file is automatically transferred to the PC.



Example: On a PC, select the PW3360 from the list of LAN connected devices and download the desired measurement files.

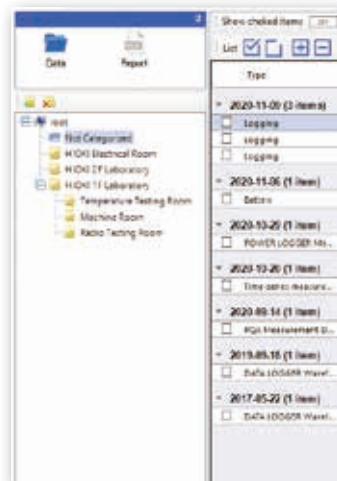
Using Existing Data (Manual)
 If you have a dedicated measurement file saved on your PC, you can simply drag and drop the dedicated file to the Gennect One app to read it.



Compatible instruments: LR8400 series, LR8410, LR8416, LR8450, LR8450-01, LR5000 series, MR6000, PW3360, PW3365, PQ3100, PQ3198, PW8001 (support coming soon)

Centralized management of measurement files

Data List
 Combine the measurement files acquired with GENNECT One into a single data list. You can manage measurement data by measurement site or by measurement time.

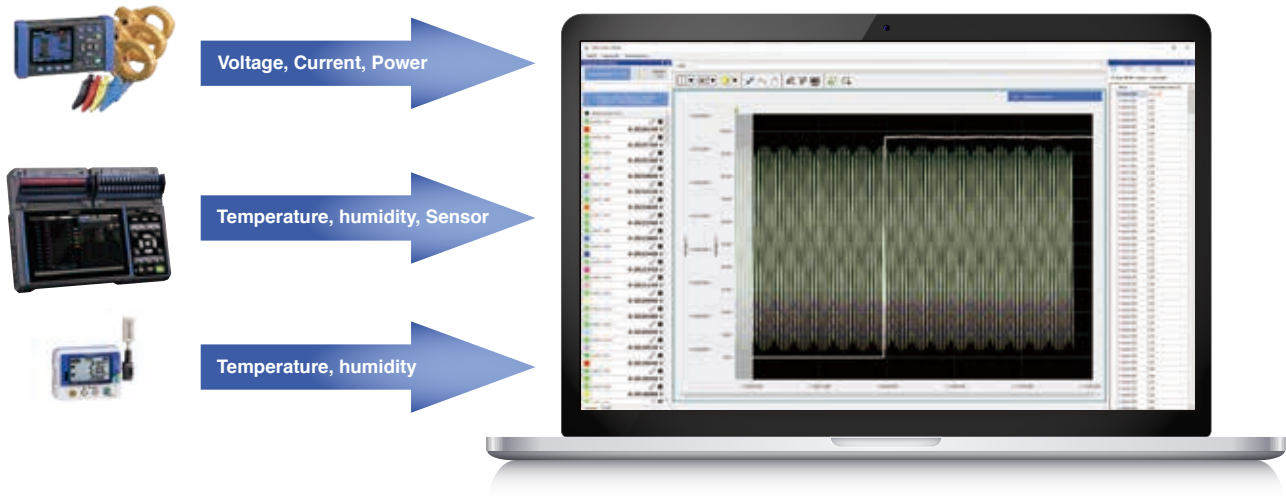


Display the measurement files in a list. Manage the measurement files easily.

- Title name
- Folder classification
- Input comments
- Search tag

Time-series Viewer

Display data measured using different instruments on a single time-series graph.

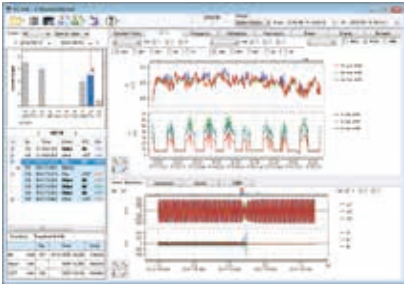


Supported data	LR8400 series, LR8410, LR8416, LR8450, LR8450-01 waveform data PW8001 measurement data (support coming soon) PW3360, PW3365 measurement data LR5000 series measurement data
Analysis function	<ul style="list-style-type: none"> • Statistical analysis (AVE, P-P, MAX, MIN, ON, OFF, Standard deviation, Accumulate, Area Value, Integral) • Waveform Search (Time, MAX, MIN, Local maximum, Local minimum, Level, Window, Amount of change) • Search for Event Marks • Editing and CSV output (Overall, between A and B cursors), • Image output
Number of display items	Max. 512 items (graphs is Max. 32 items)

Instrument-specific Software (Options)

Clicking on a measurement file launches the browsing software and displays the file.

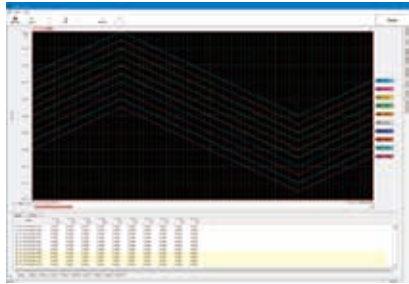
*You need to install the software beforehand



PQ ONE



POWER LOGGER VIEWER SF1001



Logger utility

Listed measurement files	Measurement files obtained by the file transfer (automatic) of GENNECT One Measurement files obtained by the file acquisition (manual) of GENNECT One Importing GENNECT Cross measurement files. (hok format) *1 Importing GENNECT Remote measurement files. (hok format) Importing measurement data from Internal memory, Recording media or External Storage via LAN connection Importing measurement data from internal memory via USB connection Image data (jpg, bmp, png, and gif formats) and pdf data Measuring instruments supporting measurement data importing: LR8400 series, LR8410, LR8416, LR8450, LR8450-01, LR5000 series, MR6000, PW3360, PW3365, PQ3100, PQ3198, PW8001 (support coming soon)
Viewing Software	PQ ONE *2: PQ3100, PQ3198 POWER LOGGER VIEWER SF1001 *3: PW3360, PW3365 Logger utility *2: LR8400, LR8410, LR8450, LR8450-01 Waveform Viewer (Wv) *2 or WAVE PROCESSOR 9335 *3: MR8875, MR6000 MR6000 Viewer *2: MR6000 Graph viewer for real-time measurement of GENNECT One *2:

*1: Battery, General measurement, Logging only *2: Free software. *3: Paid software.

Operating environment

Supported OS	Windows 7 (32bit/64bit), Windows 8.1 (32bit/64bit), Windows 10 (32bit/64bit)
Software environment	Microsoft .NET Framework 4.6.2 or later
CPU	2 GHz or more operating clock
Memory	4 GB or more
Display	Resolution 1366 x 768 or more
Hard disk	Free space of 1 GB or more

Specification

Logging	
Interface	LAN
Function	Real-time (*) graph display, list display, and automatic output (daily report, CSV) of measured values from measuring instruments connected via LAN *Acquire measured values (current values) displayed on instruments at a set interval (as short as 1 sec.) using the computer's timer.
Logging intervals	1, 2, 5, 10, 30 sec., 1, 2, 5, 10, 30 min., 1 hour
Measurement parameters	<ul style="list-style-type: none"> • PW6001, PW3390: Basic Measurement items, Harmonic measurement items (Instantaneous value per interval) • PQ3100, PQ3198, PW3365, PW3360: Voltage, Current, Power (Instantaneous value per interval, MAX, MIN, AVE values between intervals) • LR8400, LR8401, LR8402, LR8410, LR8450, LR8450-01, MR6000: Various measurement items such as Temperature, Analog input, etc. (Instantaneous value per interval) • Support coming soon: PW8001, PW3335, PW3336, PW3337 • Inter-channel calculation value
Number of items able to monitor and log	Max. 512 items + Inter-channel calculation value 16 items *Max. 32 items when simultaneously displaying graphs
Recording time	Recording time: Continuous measurement/Set time, file segmentation: 1 day / 1 hour * Stop logging when the storage capacity of the PC drops below 512MB
Dashboard	
Interface	LAN
Function	<ul style="list-style-type: none"> • Monitor measured values in real time from LAN-connected instruments.* • Display alarms in real time when a measured value exceeds a threshold.* • Display measured values on a user-selected image. • Saving measured values (CSV format), Daily report output *Acquire measured values (current values) displayed on instruments at a set interval (as short as 1 sec.) according to the computer's timer.
Monitor interval	1, 2, 5, 10, 30 sec., 1, 2, 5, 10, 30 min., 1 hour
Measurement parameters	<ul style="list-style-type: none"> • PW6001, PW3390: Basic Measurement items, Harmonic measurement items (Instantaneous value per interval) • PQ3100, PQ3198, PW3365, PW3360: Voltage, Current, Power (Instantaneous value per interval, MAX, MIN, AVE values between intervals) • LR8400, LR8401, LR8402, LR8410, LR8450, LR8450-01, MR6000: Various measurement items such as Temperature, Analog input, etc. (Instantaneous value per interval) • Support coming soon: PW8001, PW3335, PW3336, PW3337 • Inter-channel calculation value
Number of measurement items	Max. 512 items + Inter-channel calculation value 16 items
Remote control	
Interface	LAN
Function	Control LAN-connected instruments from a computer.
Compatible instruments	PQ3100, PQ3198, PW3360, PW3365, PW3390, PW6001 LR8400, LR8401, LR8402, LR8410, LR8450, LR8450-01, MR6000 Support coming soon: PW8001, PW3335, PW3336, PW3337
Number of simultaneous operation	1 unit at a time
Automatic file transfer	
Interface	LAN
Function	Automatically send files saved by LAN-connected instruments to a computer.
Compatible instruments	PQ3100, PQ3198, PW3360, PW3365, PW8001 (support coming soon) LR8400, LR8401, LR8402, LR8410, LR8450, LR8450-01, MR6000
File Acquisition (manual)	
Interface	LAN, USB (USB is BT3554, 3554 only)
Function	Acquire files saved by LAN-connected instruments with a computer.
Compatible instruments	PQ3100, PQ3198, PW3360, PW3365, PW3390, PW6001, PW8001 (support coming soon) LR8400, LR8401, LR8402, LR8410, LR8450, LR8450-01, MR6000, BT3554-50, BT3554, 3554
Time-series viewer	
Supported data	LR8400 series, LR8410, LR8450, LR8450-01, LR5000 series, PW8001 (support coming soon), PW3360, PW3365
Number of display items	Max. 512 items (graphs is Max. 32 items)
Other Functions	
Files loading	Data file (.hok) obtained by GENNECT Cross for iOS/Android *Logging, General Measurement, image and battery formats only *No direct Bluetooth® connection is possible, please use the smartphone app for Bluetooth® data collection
Instrument clock synchronization	PQ3100, PQ3198, PW3360, PW3365, PW3390, PW6001, PW8001 (support coming soon) LR8400, LR8401, LR8402, LR8410, LR8450, LR8450-01, MR6000, BT3554-50, BT3554, 3554
CSV output	Output 512 items at once (logging function)
Report creation	PDF, Word and Excel® formats

Note: Company names and product names appearing in this brochure are trademarks or registered trademarks of various companies.

HIOKI
HIOKI E. E. CORPORATION

HEADQUARTERS
81 Koizumi,
Ueda, Nagano 386-1192 Japan
<https://www.hioki.com/>



Scan for all regional contact information

DISTRIBUTED BY