

FiberLert™ Live Fiber Detector

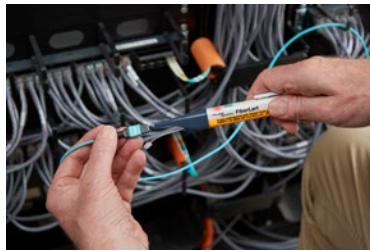
Priced and sized to fit every pocket

Stop guessing. Quickly verify fiber activity, polarity, and connectivity with the FiberLert™ Live Fiber Detector. Just place in front of the fiber end face or port and a light and tone indicate an active fiber—no setup or interpretation required. This pocket-sized tool tests single-mode, multimode, UPC and APC patch cords and ports with a non-contact/non-contaminating detector. The LightBeat™ feature flashes the LED, indicating a powered-on condition and good battery, a timer shuts FiberLert™ off after five minutes of inactivity to extend battery life (2xAAA, included). Rugged design includes a convenient pocket clip and is backed by a two-year warranty.

- Detects optical power in single-mode and multimode fiber wavelengths (near infrared range 850 nm to 1625 nm)
- No setup or interpretation needed—light and sound indicate presence of an optical signal
- “Non contact” detector reduces the risk of contamination and damage
- Suitable for ports and patch cords, SM, MM, UPC and APC connections
- LightBeat™ flashes to indicate operation and battery status; powers off after five minutes of inactivity to preserve battery life (2xAAA, included)
- Two-year warranty



Is this SFP working?



Is this trunk live?



What's the polarity?



Is this port in use?



Actual size

0.6" x 1.0" x 6.6"

1.6 x 2.5 x 16.8 cm

Stop guessing. Get FiberLert

Order model FIBERLERT-125

www.flukenetworks.com/fiberlert